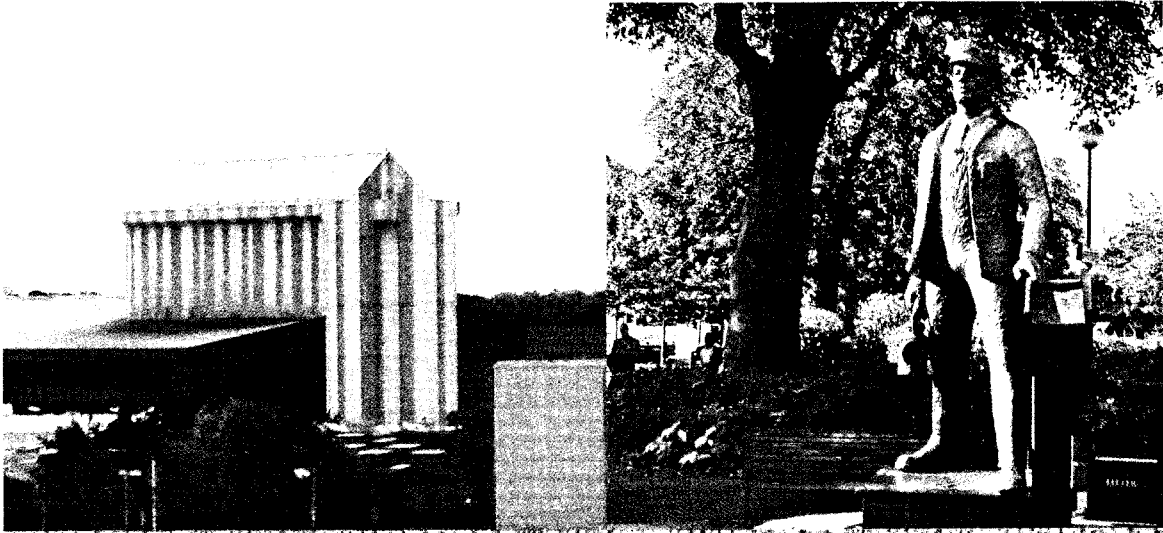
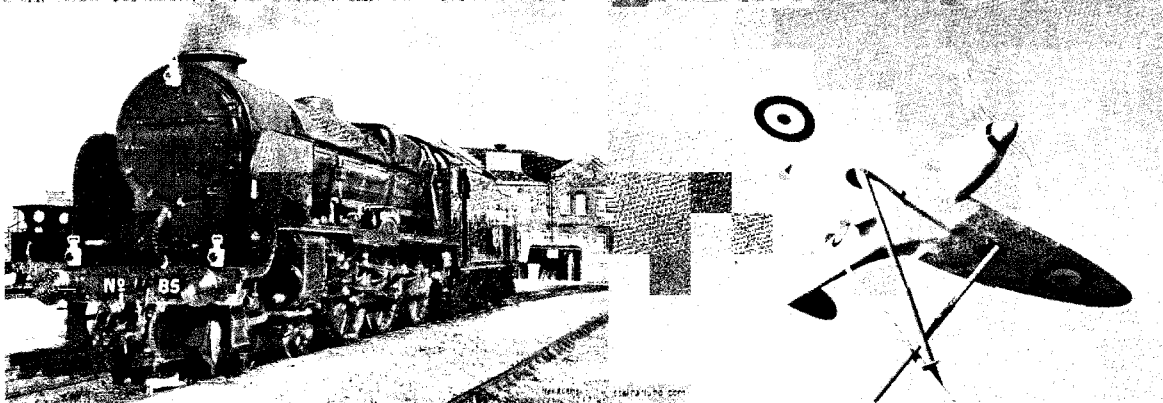


# EASTLEIGH & DISTRICT LOCAL HISTORY SOCIETY



## AIR RAID SHELTERS IN THE BOROUGH OF EASTLEIGH ADDITIONAL DISCOVERY



Paper 62A

# PASSAGES DISCOVERED IN FEBRUARY 2015

Passage discovered during work on the Leigh Road precinct  
on 4<sup>th</sup> February 2015.

It is part of the eastern-most shelter on the Recreation Ground and site of the Railway Institute, thought to have been destroyed when Safeways and associated buildings were erected in 1986.



Eric Reed took this picture by putting his arm through a small hole in the roof of the shelter. (Not the hole in the following photograph) and thus provided us with interesting information.



A hole photographed looking east towards the brick Bingo Hall building and about five feet from it near the rainwater pipe. The breeze block wall was probably built during or before the previous demolition. The reinforcement wire grid was placed there in 2015 and is now concreted over. The passage ran from here towards the west.



The hole in the photograph is behind the orange barriers behind the tree near the blue drainpipe. The passage had been filled in but not destroyed.



The direction of the passage was towards the Bingo Hall.  
This is the view away from the hole.

On 9<sup>th</sup> February 2015 Another passage was found. An Email sent to Eric Reed by the Senior Engineer Damian Walsh.



*Eric, I have found another section of air raid shelter.  
It would appear that the previous contract to Market Place also found it and then covered it with this road plate  
We will remove the road plate and place a cover and frame on a couple of courses of bricks over the opening.*

**Damian Walsh, Senior Engineer, Transportation and Engineering.**

Clive Rowe, a member of staff of the contractor, Earlcoate Construction, was most helpful. He used a truck to remove the iron plate to reveal the hole.



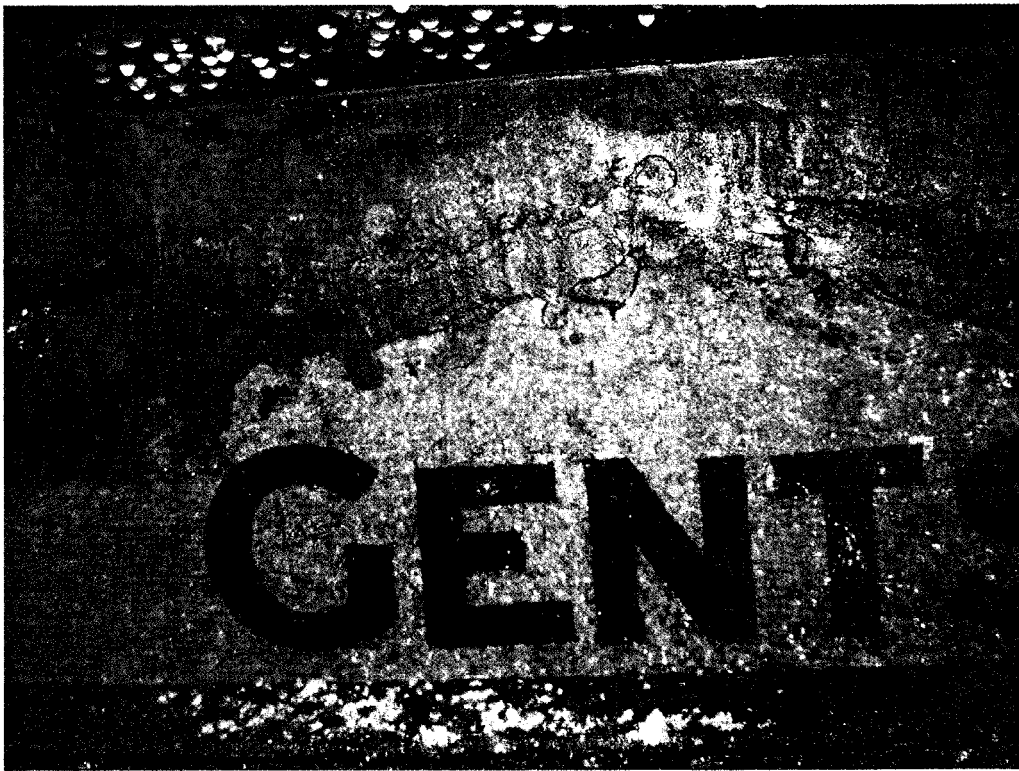
View of hole in surface looking South.

It was impossible to enter the hole for Health & Safety reasons but Clive precariously held the camera down the hole to take pictures.

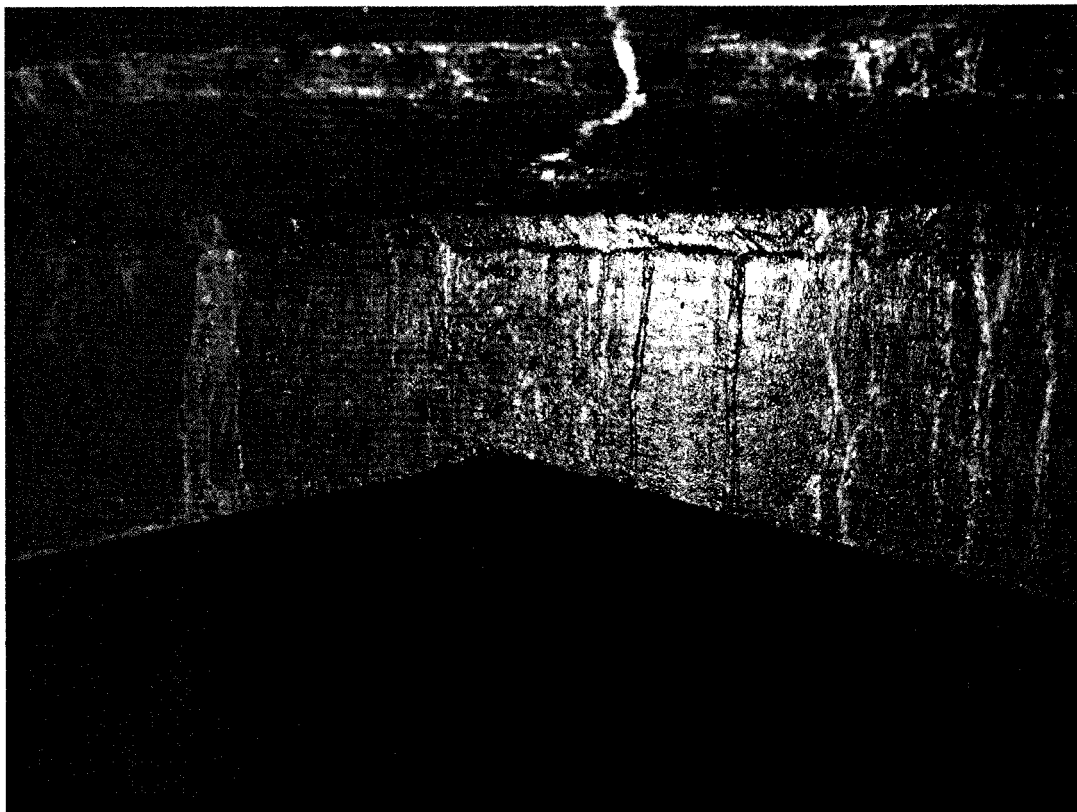
The tunnels run east and north only from this point.



View looking north (inside the hole).  
It looks as though there might be a branch to the left.

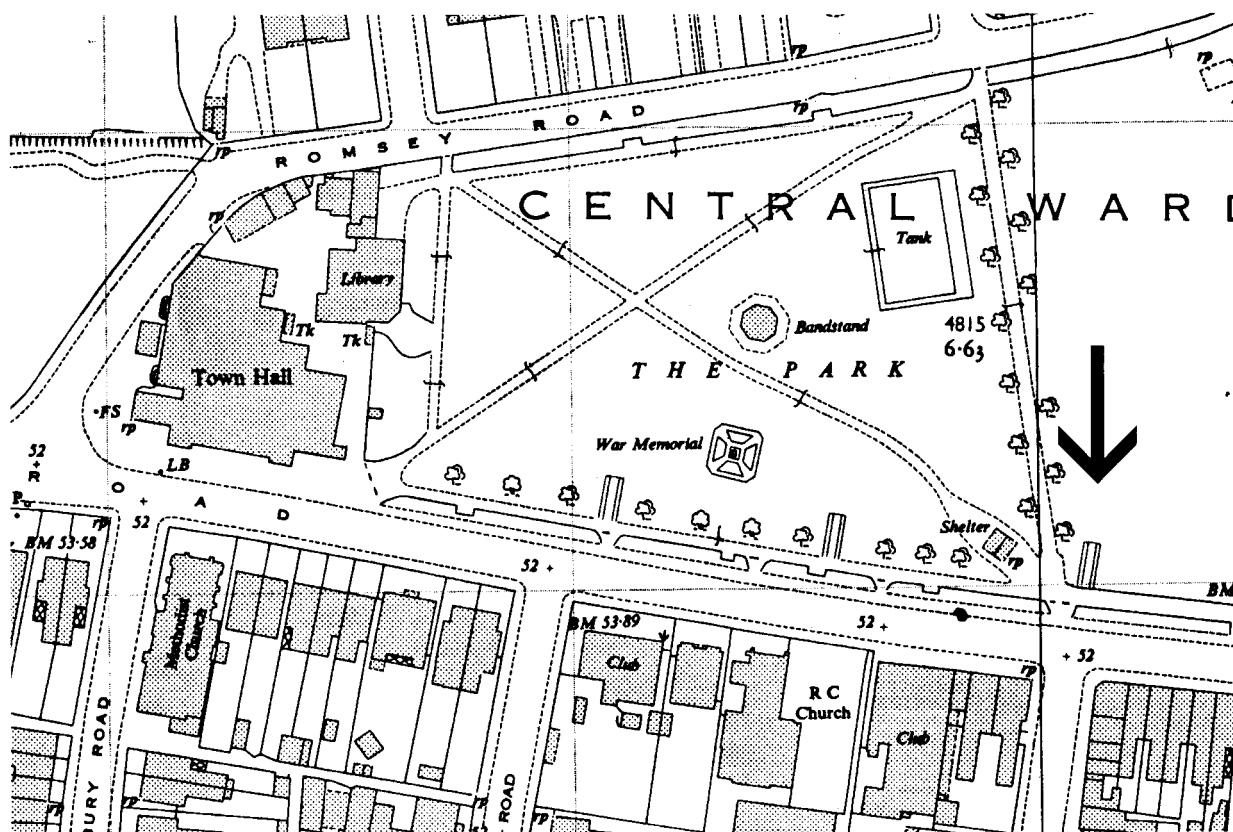


View looking south (inside the hole).



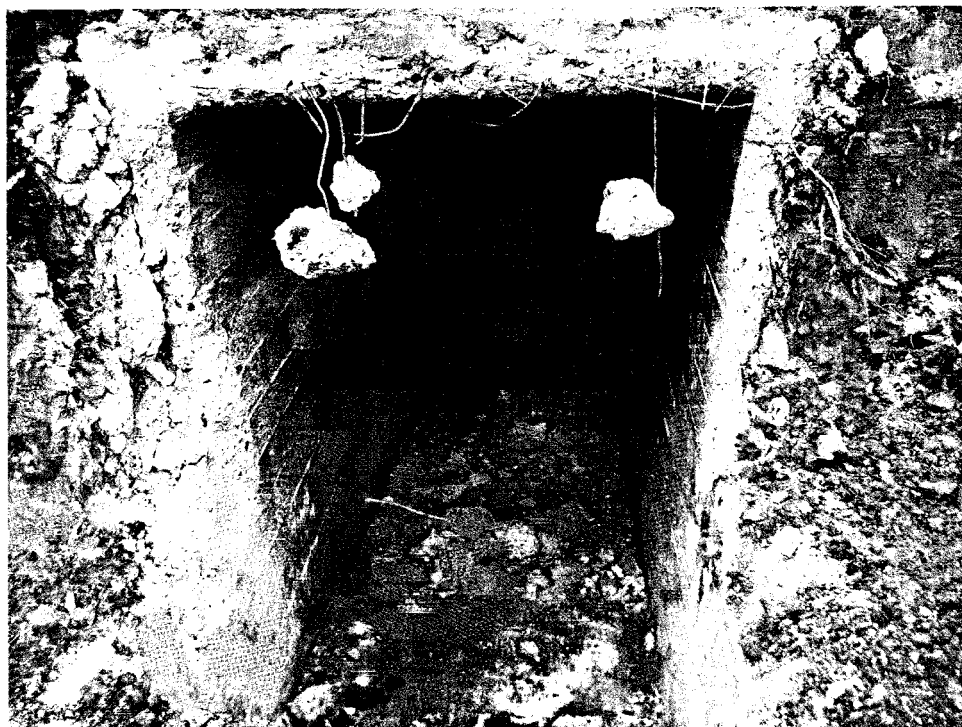
View looking east (inside the hole). The flash was ineffective, but distant rubble can just be seen.

Positions of the entrances to the three shelters. The Easternmost is conjectural but appears to be correct.



The newly discovered shelter was at the end of High Street.

When excavating a deep trench in which to plant trees on 24<sup>th</sup> February 2015 the remains of the entrance to this shelter at the North end of High Street was uncovered. It went in the same northerly direction as the other shelters. The exterior of a shelter-passage crosses this trench north to south and is undamaged.



This is the remains of the entrance which has now been walled up to prevent soil from entering and the large trench behind has been filled with soil and reinforced with plastic covered steel scaffolding blocks.

At the end of this short entrance is a red No Smoking sign and there is a right turn at this point.



This passage is long. I walked along it but as it was dark I only saw that there was another right turn near the end. The circular patterns are due to a LED lamp and I did not notice the toilet recesses on the left.

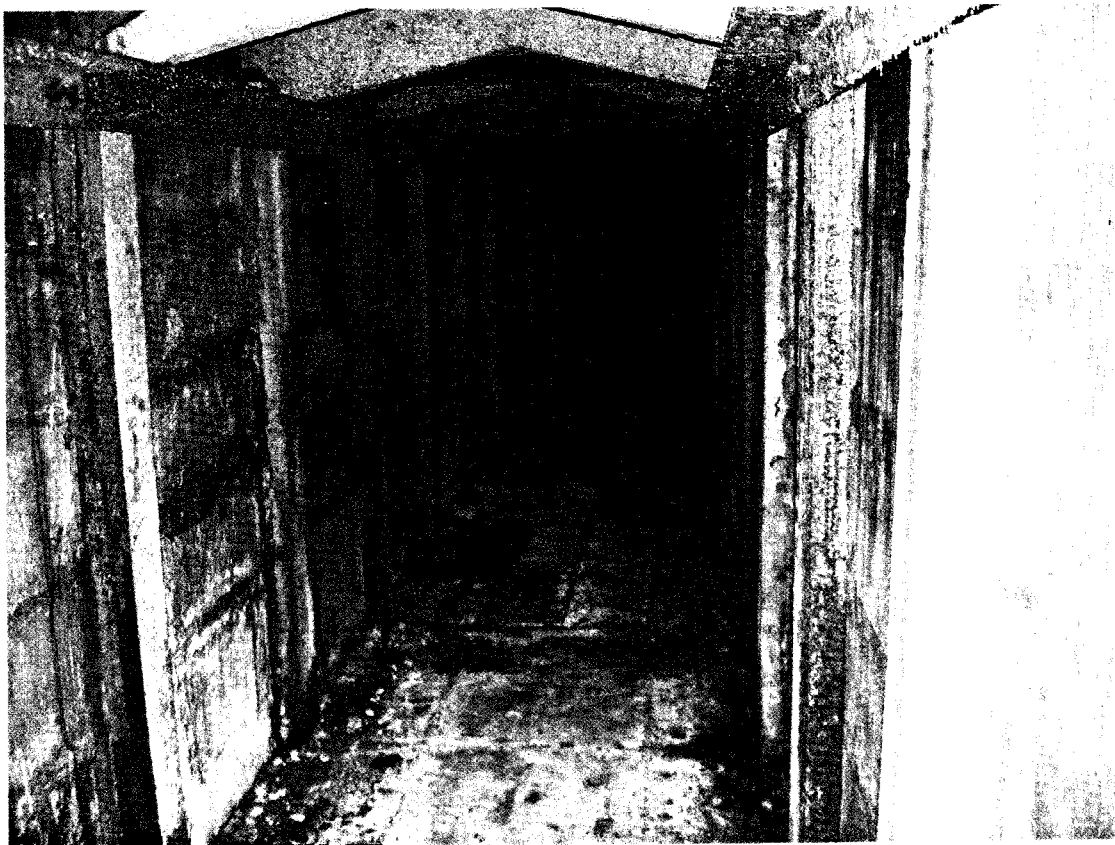




Looking back towards the entrance there is a black Exit Sign.



If we about turn here there is another long passage to the right in the direction of Leigh Road.



This will be seen later from the far end and also when its exterior was exposed when the deep trench was open.

Nearly opposite this passage there is a Ladies Toilet cubicle on the left.



I was not allowed to go any further that day.



Pictures of the only remaining manhole entrance to these passages.

The next day when the bricking up of the entrance had commenced I entered the shelter with Damian Walsh the project engineer and one of his colleagues who held a lamp. I took photographs as we walked around the maze but my flash did not work well and the first five pictures were just black and I lost my bearings. The following pictures are in order of walking round the maze after this but I lost track of turnings. Sometimes I took two pictures near the same place.

At the far end of the first passage was a Gentleman's toilet cubicle on the left opposite another passage. Photographs did not come out.



6



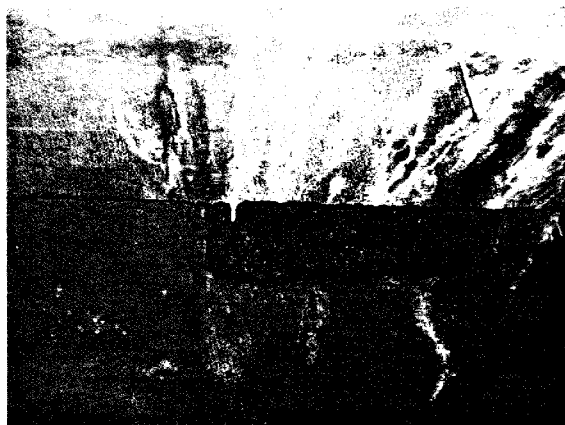
7



8



9



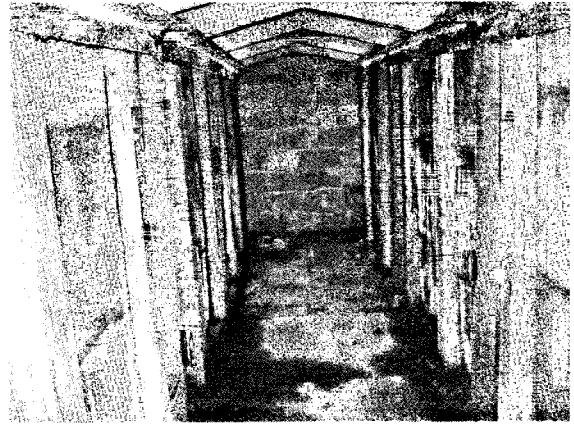
10



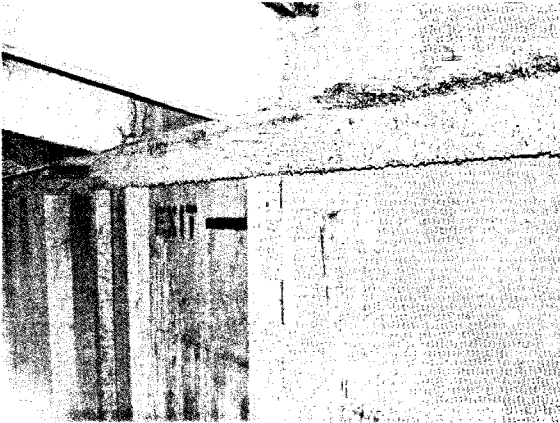
11



12



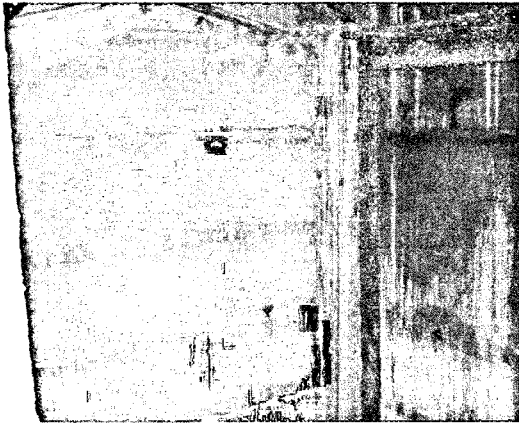
13



14



15



16



17



18

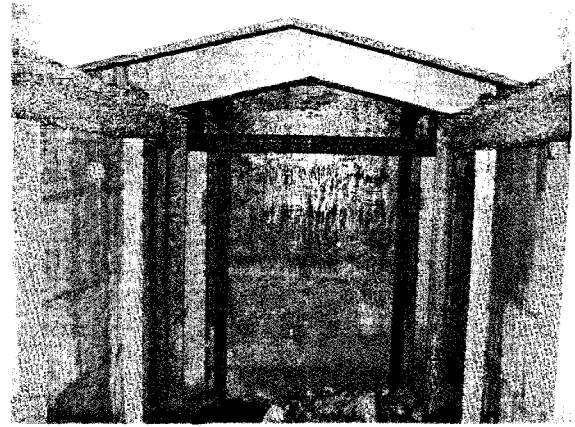


19

A manhole cover will be placed above this.



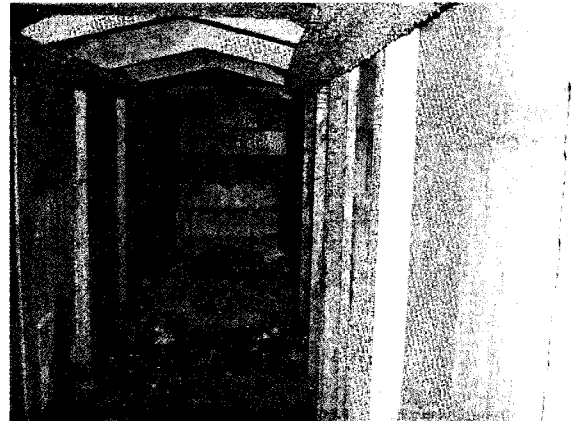
20



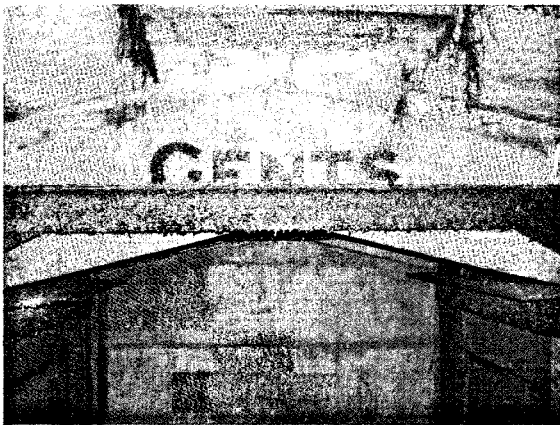
21



22

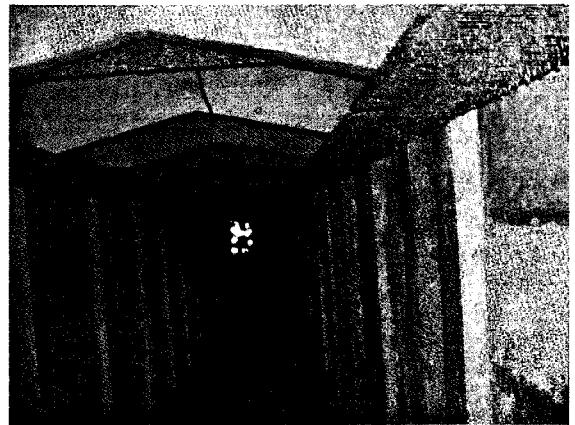


23



A manhole cover will be placed above this.

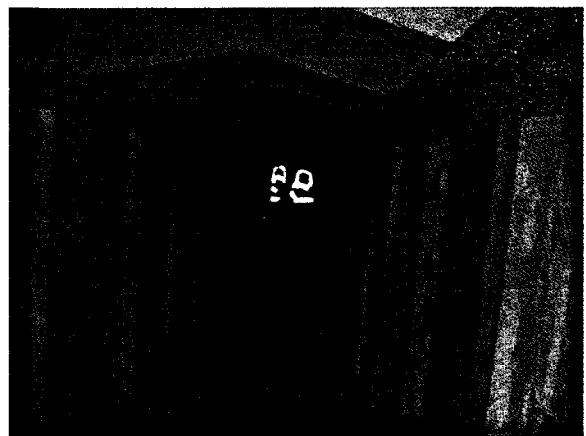
24



25



26

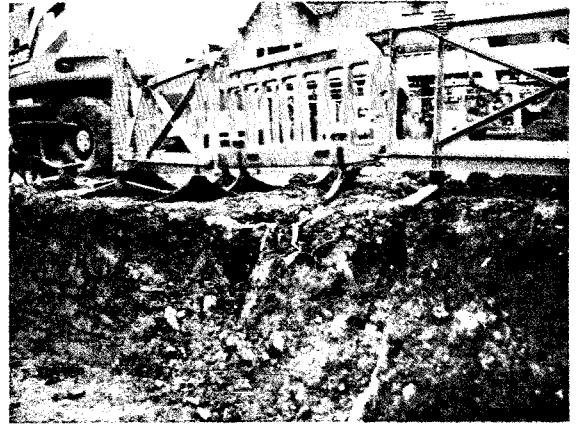


27

The glow at the end was from stripes on Eric Reed's fluorescent jacket, as he had arrived just before we reached the entrance.



29



30

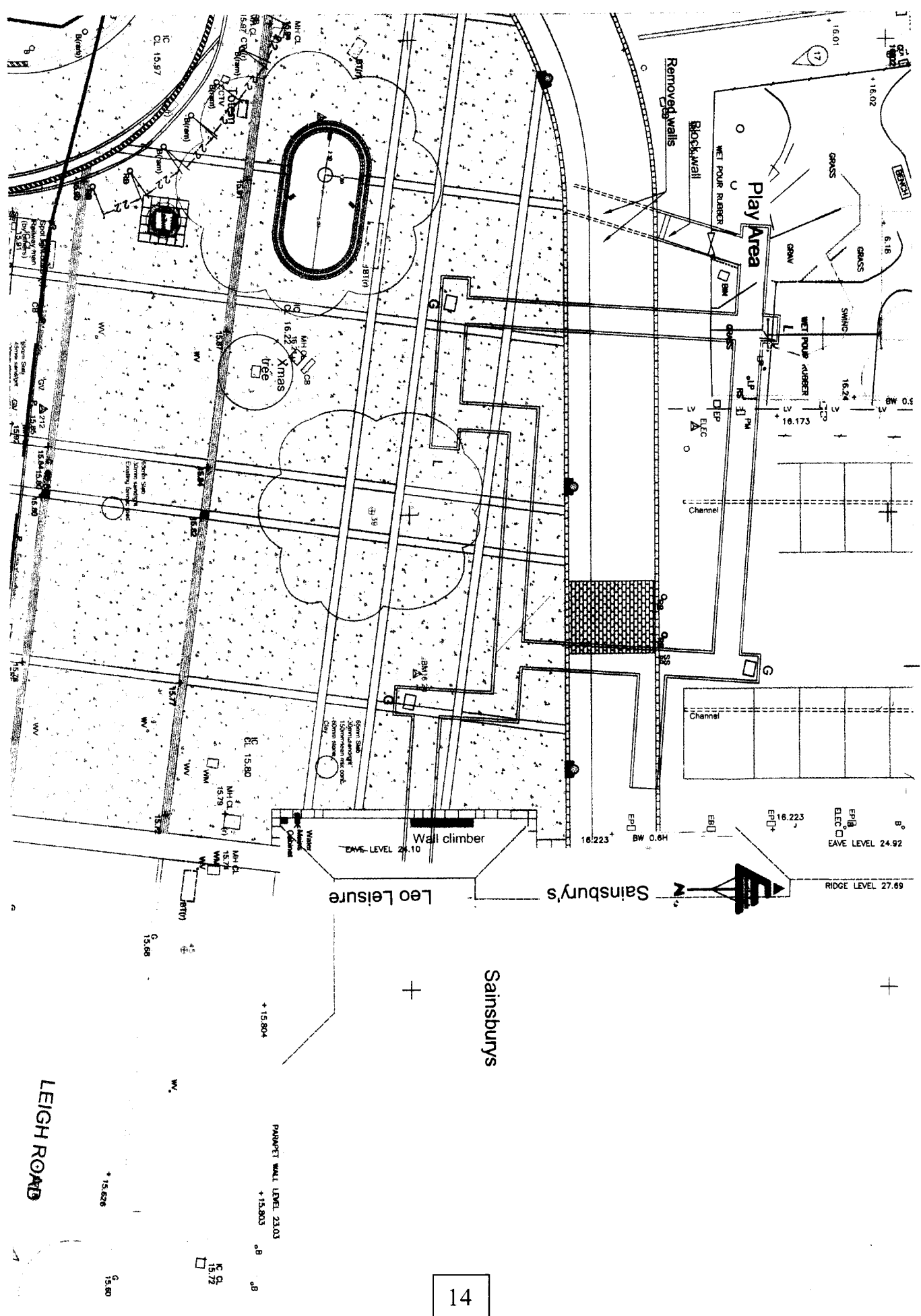
The remains of the destroyed entrance slope looking towards Leigh Road and High Street.



31

The ladder rests against the upper part of the outside shell of the last tunnel we walked along to return to the entrance as revealed by the deep excavation now filled with soil.

Damian Walsh has produced a diagram of the tunnel system. Further investigation would be useful.



LEIGH ROAD

PROJEPT WALL LEVEL 23.03

+15.626

+15.804

15.80

15.72

5.66

RIDGE LEVEL 27.69

EAVE LEVEL 24.92

BW 0.6H

EMMS LEVEL 24.10

Leo Leisure

Sainsbury's

Sainsbury's

Play Area

Removed walls

Blockwall

WET POUR RUBBER

Channel

Channel

Xmas tree

Wall climber

EP1B ELEC

EP1A

EP1C

EP1D

EP1E

EP1F

EP1G

EP1H

EP1I

EP1J

EP1K

EP1L

EP1M

EP1N

EP1O

EP1P

EP1Q

EP1R

EP1S

EP1T

EP1U

EP1V

EP1W

EP1X

EP1Y

EP1Z

EP2A

EP2B

EP2C

EP2D

EP2E

EP2F

EP2G

EP2H

EP2I

EP2J

EP2K

EP2L

EP2M

EP2N

EP2O

EP2P

EP2Q

EP2R

EP2S

EP2T

EP2U

EP2V

EP2W

EP2X

EP2Y

EP2Z

EP3A

EP3B

EP3C

EP3D

EP3E

EP3F

EP3G

EP3H

EP3I

EP3J

EP3K

EP3L

EP3M

EP3N

EP3O

EP3P

EP3Q

EP3R

EP3S

EP3T

EP3U

EP3V

EP3W

EP3X

EP3Y

EP3Z

EP4A

EP4B

EP4C

EP4D

EP4E

EP4F

EP4G

EP4H

EP4I

EP4J

EP4K

EP4L

EP4M

EP4N

EP4O

EP4P

EP4Q

EP4R

EP4S

EP4T

EP4U

EP4V

EP4W

EP4X

EP4Y

EP4Z

EP5A

EP5B

EP5C

EP5D

EP5E

EP5F

EP5G

EP5H

EP5I

EP5J

EP5K

EP5L

EP5M

EP5N

EP5O

EP5P

EP5Q

EP5R

EP5S

EP5T

EP5U

EP5V

EP5W

EP5X

EP5Y

EP5Z